

Waterproof



This Ultra-High Q Band Pass Filter provides 8 Poles of Cavity Filtering. It's designed to cover the entire 2.4GHz ISM band (CH1 thru CH 11). If your desiring to clean-up spurious out-of-band emissions this filter will yield the results your looking for. It's sealed rugged aluminum chassis make it ideal for indoor or outdoor applications.

Typical Performance Parameters

Center Frequency (Fc): 2436.5 MHz

Selectivity:

Selectivity	Bandwidth
3dB	70 MHz
20dB	Fc+/- 45.5 MHz
30dB	Fc+/- 53 MHz
60dB	Fc+/- 75 MHz

Number of Cavities: 8 Poles with inter-stage cross coupling

Insertion Loss: < 1.1dB (-0.9dB Typical)

Passband Ripple: < 0.25dB

Return Loss: > 15dB (18dB Typical) 50 Ohm in/out impedance

Harmonic Rejection: > 80dBc (90dB Typical)

Power Handling: 50 Watts

Connectors: (2) N-Female

Operational Temp: -40 to +85 Deg C

Size / RF Connectors: 4.84" x 2.8"x 1.22" ("N" type Female Connectors)

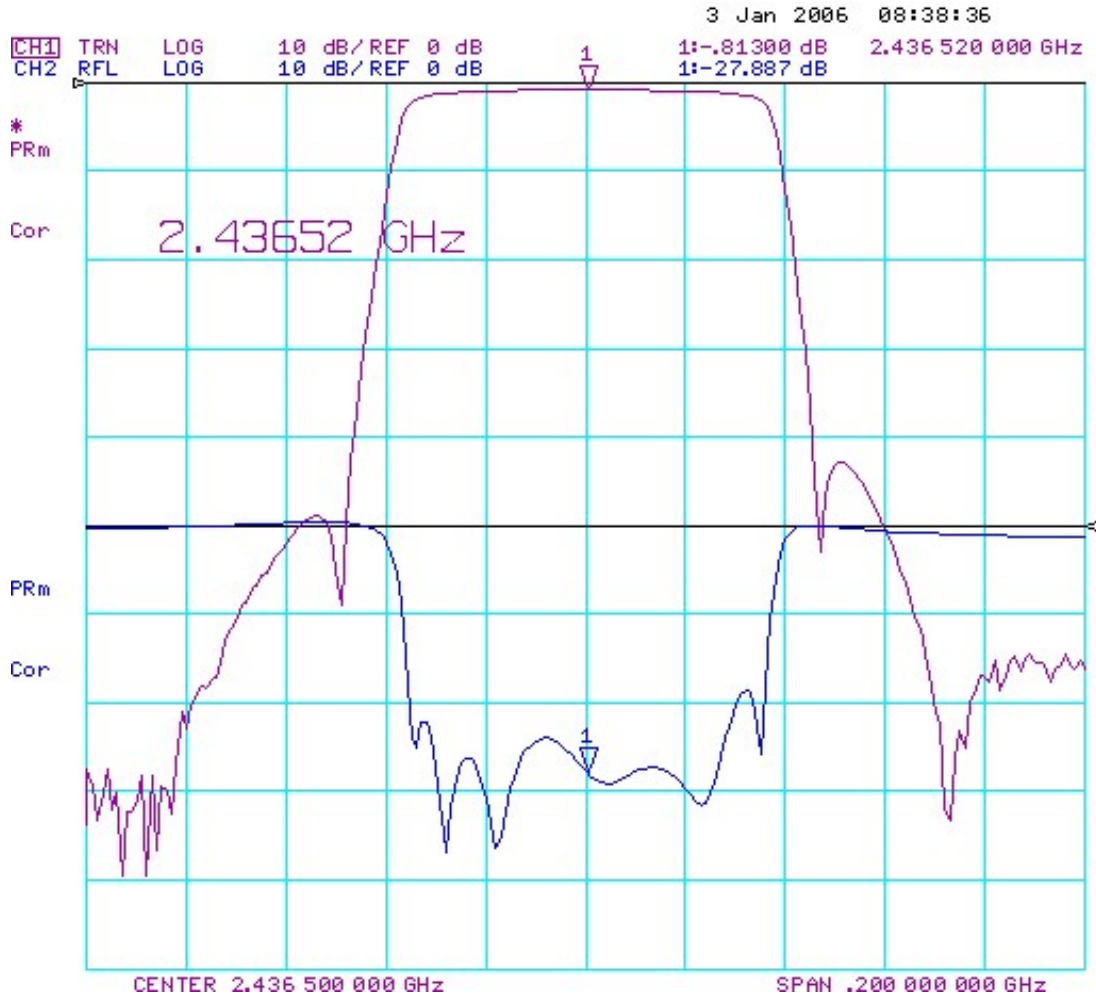
Weight: 1.2 lbs (filter only)

Chassis: Operational for Outdoor Applications, Machined Aluminum, Painted Black

Lightning Suppression: Shunt inductive (DC Short)

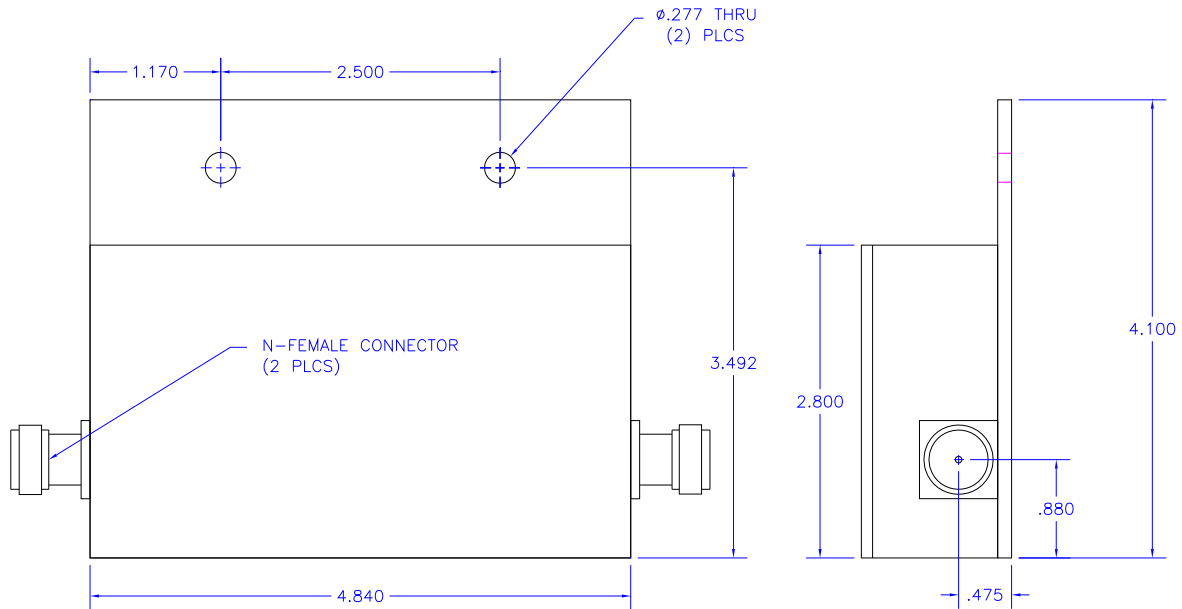
9017 Cincinnati Columbus Rd.
West Chester, Ohio 45069
PH: 513-777-2774

Typical Selectivity Plot:



9017 Cincinnati Columbus Rd.
West Chester, Ohio 45069
PH: 513-777-2774

Mechanical Outline:



9017 Cincinnati Columbus Rd.
West Chester, Ohio 45069
PH: 513-777-2774